

Liam Tanner
The Figure



The Starting point

My starting point is the Life Drawing class from the previous semester and an artist, Egon Schiele



Egon Schiele

Notations

The artists that have been a good influence while making work so far this semester have been Egon Schiele , Brett Whitely and Mike Parr. This is because of there mark making variety and technique as well as the scale at which the work is produced.

key words

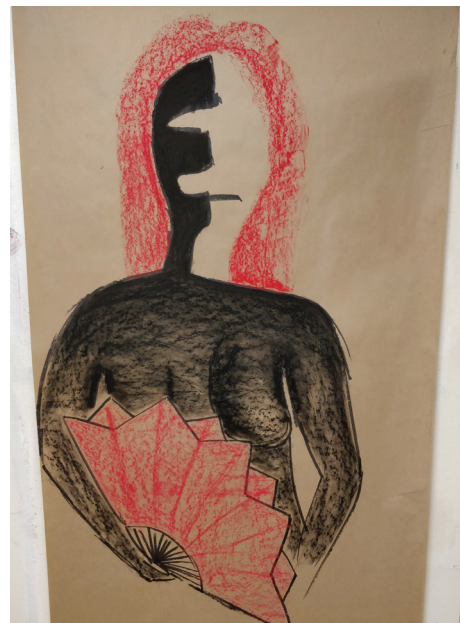
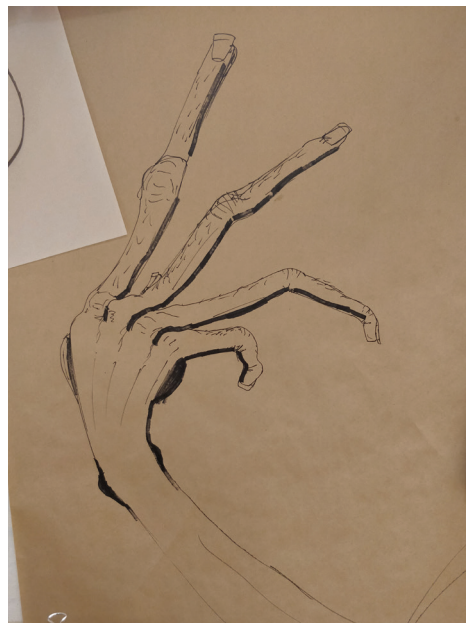
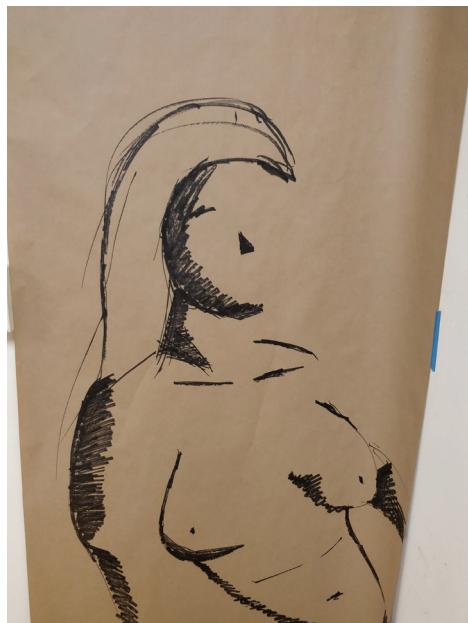
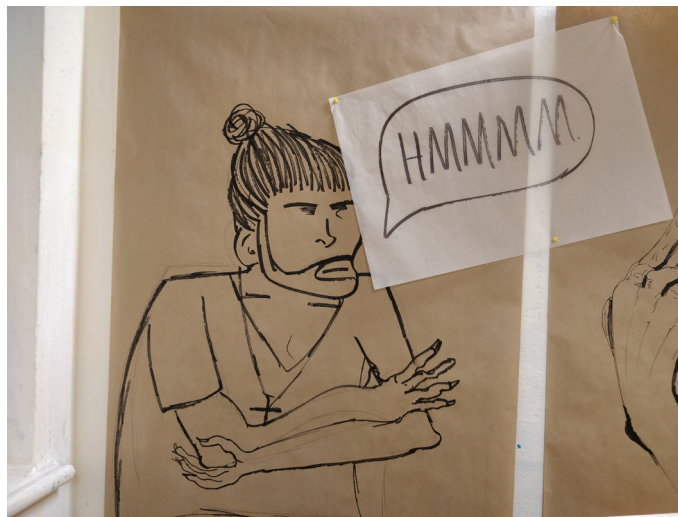
- scale
- line
- figure
- exageration
- life Drawing
- Limb

Brett Whitely



Mike Parr

Make



Present

What's Next?

- More figures?
- More Hands?
- developing the my mark making?